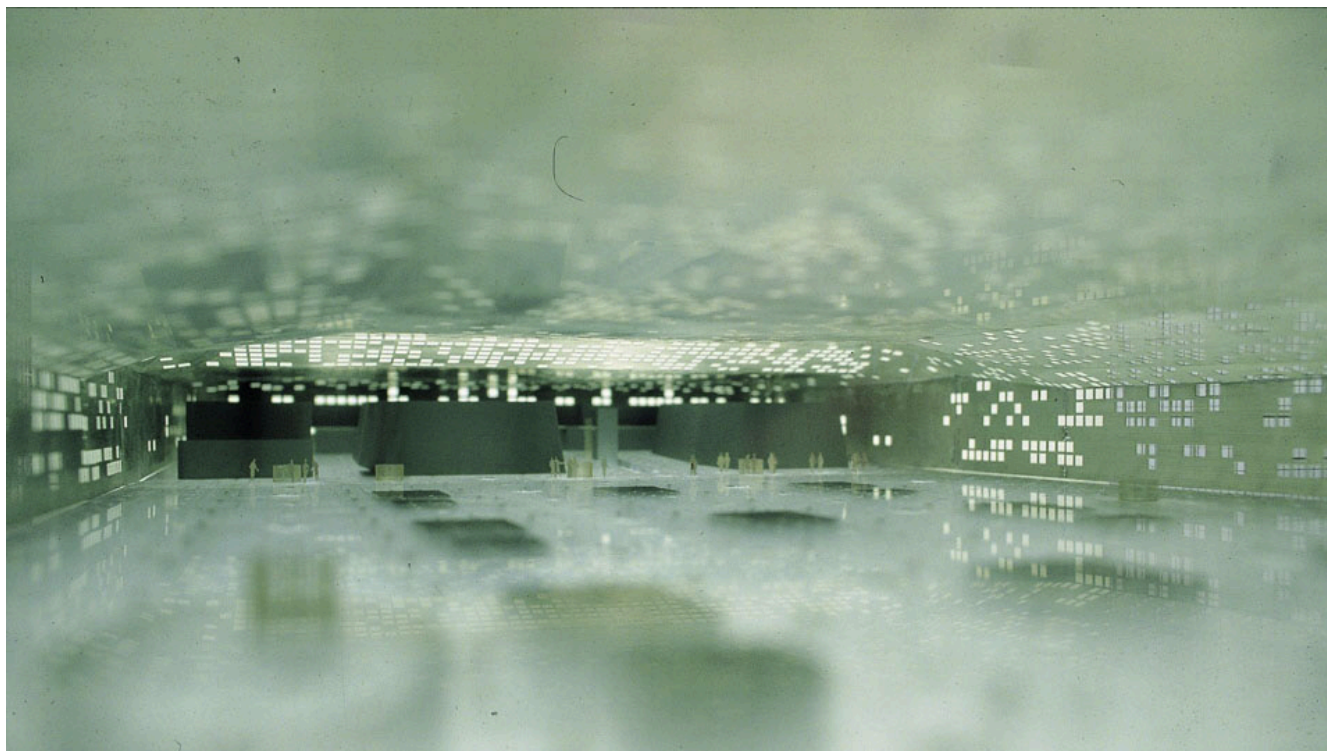


Métafort Multimedia Research Center

Aubervilliers, France

1998



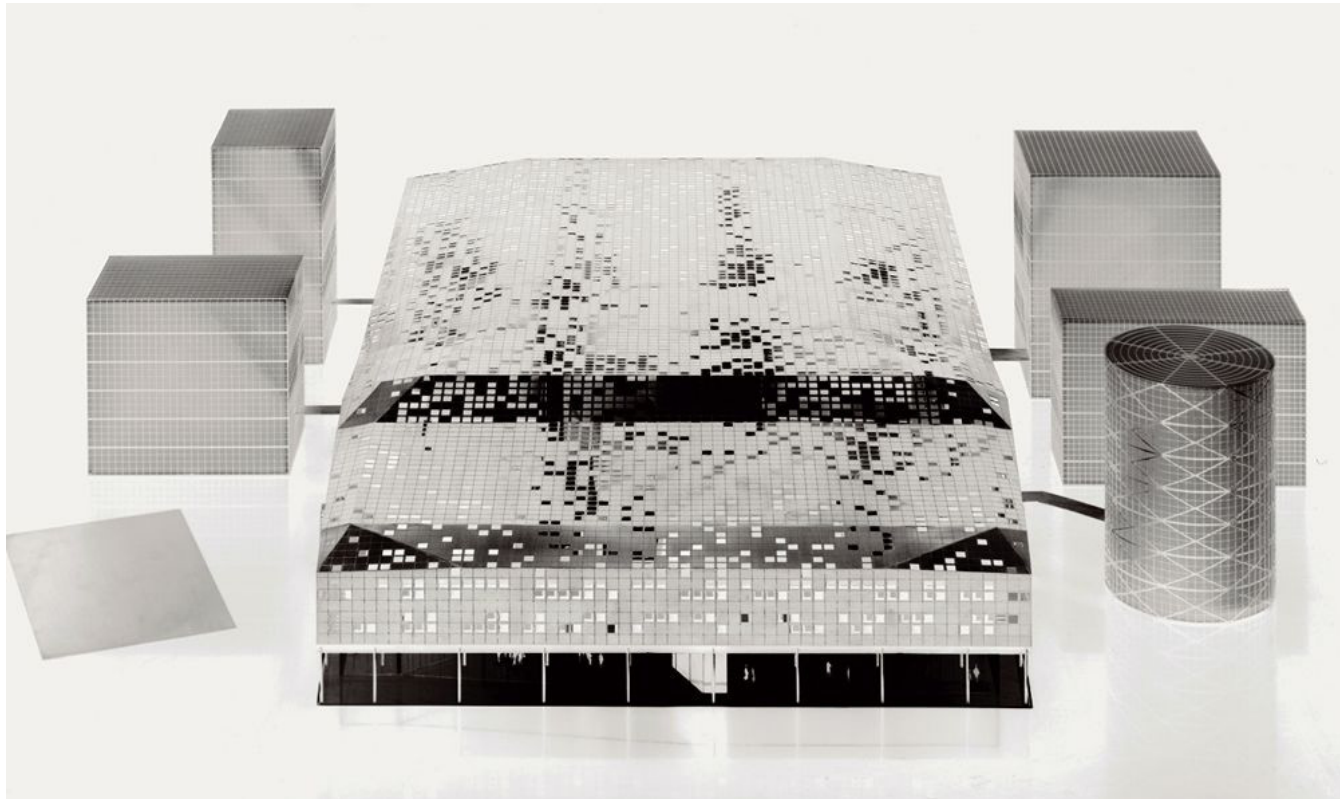
» *image: LIN*

» *AMF-01-ESS-LIN-internal view of métaphor*

Métafort Multimedia Research Center

Aubervilliers, France

1998



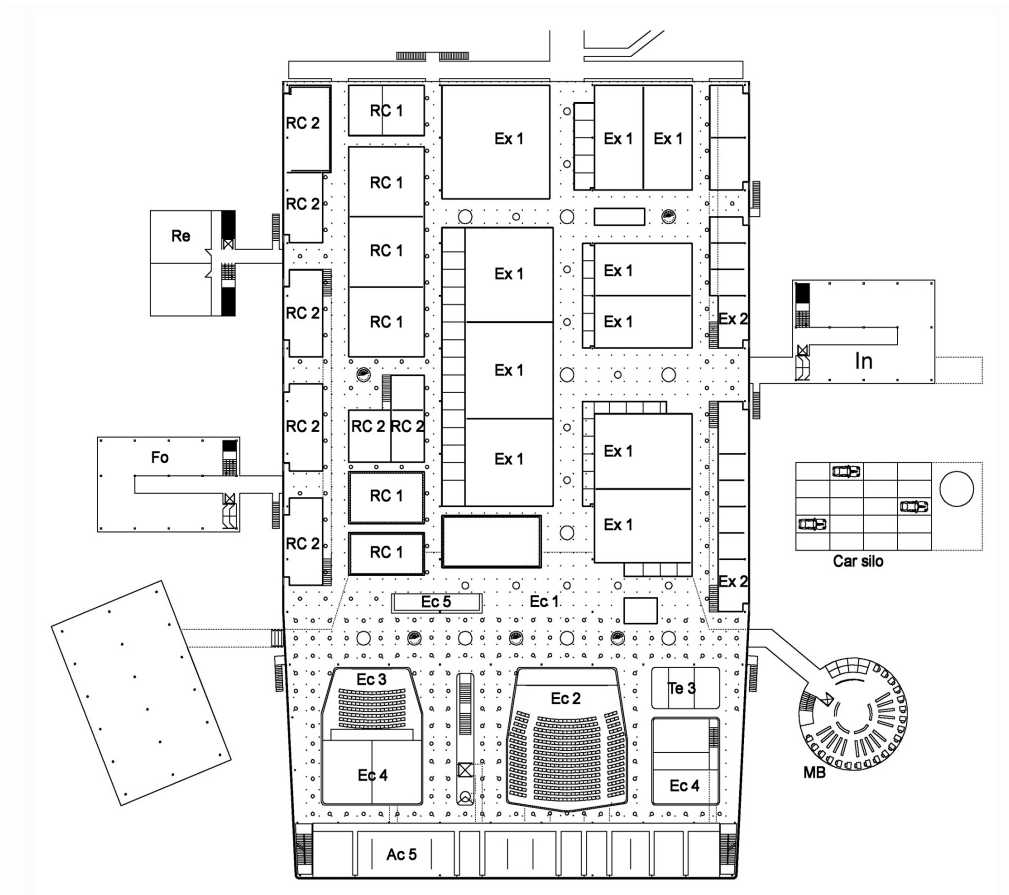
» *image: LIN*

» *AMF-02-ESS-LIN-morphology*

Métafort Multimedia Research Center

Aubervilliers, France

1998



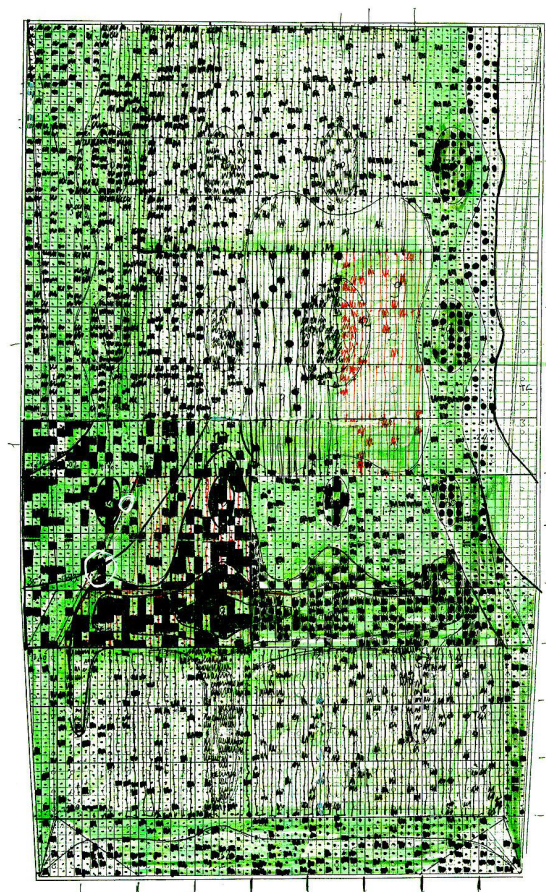
» image: LIN

» AMF-03-ESS-LIN-plan

Métafort Multimedia Research Center

Aubervilliers, France

1998



» *image: LIN*

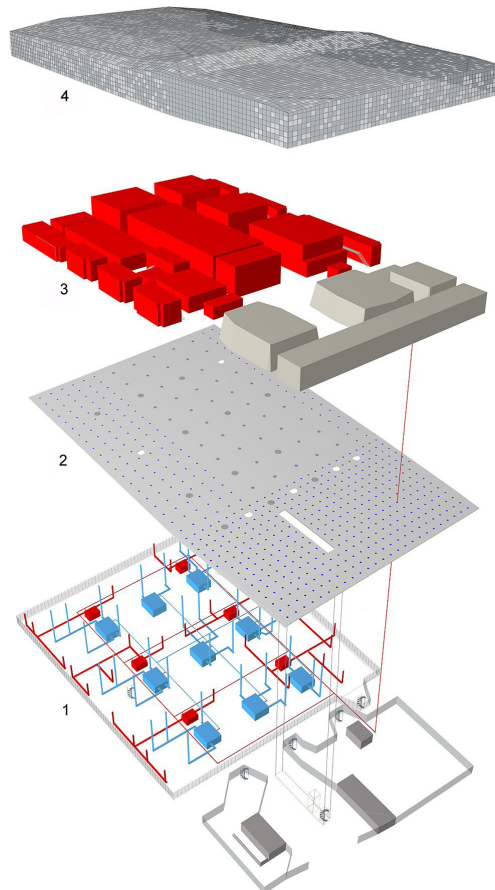
» *AMF-04-ESS-LIN-development of envelope*

Métafort Multimedia Research Center

Aubervilliers, France

1998

- » 4 Envelope Structure
- » 3 Village Structure
- » 2 Perforated Platform
- » 1.Services



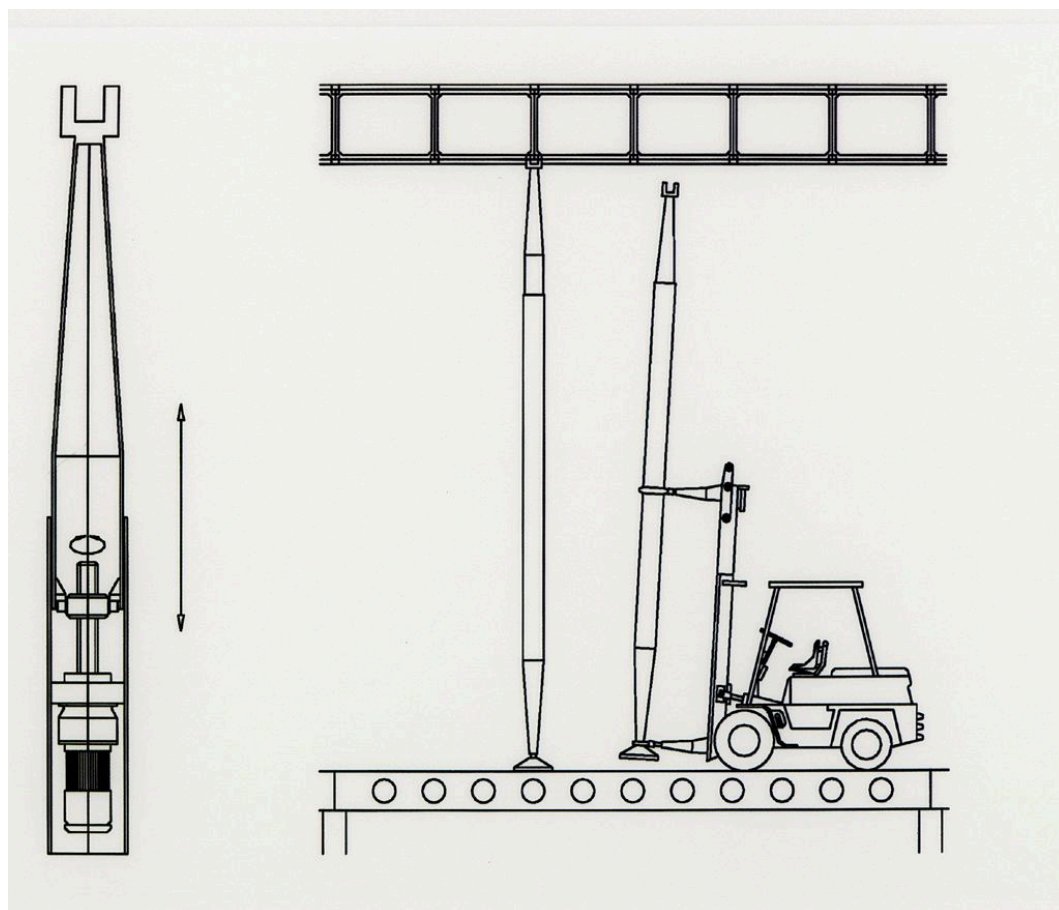
» image: LIN

» AMF-05-ESS-LIN-axonometric view of multiple layers

Métafort Multimedia Research Center

Aubervilliers, France

1998



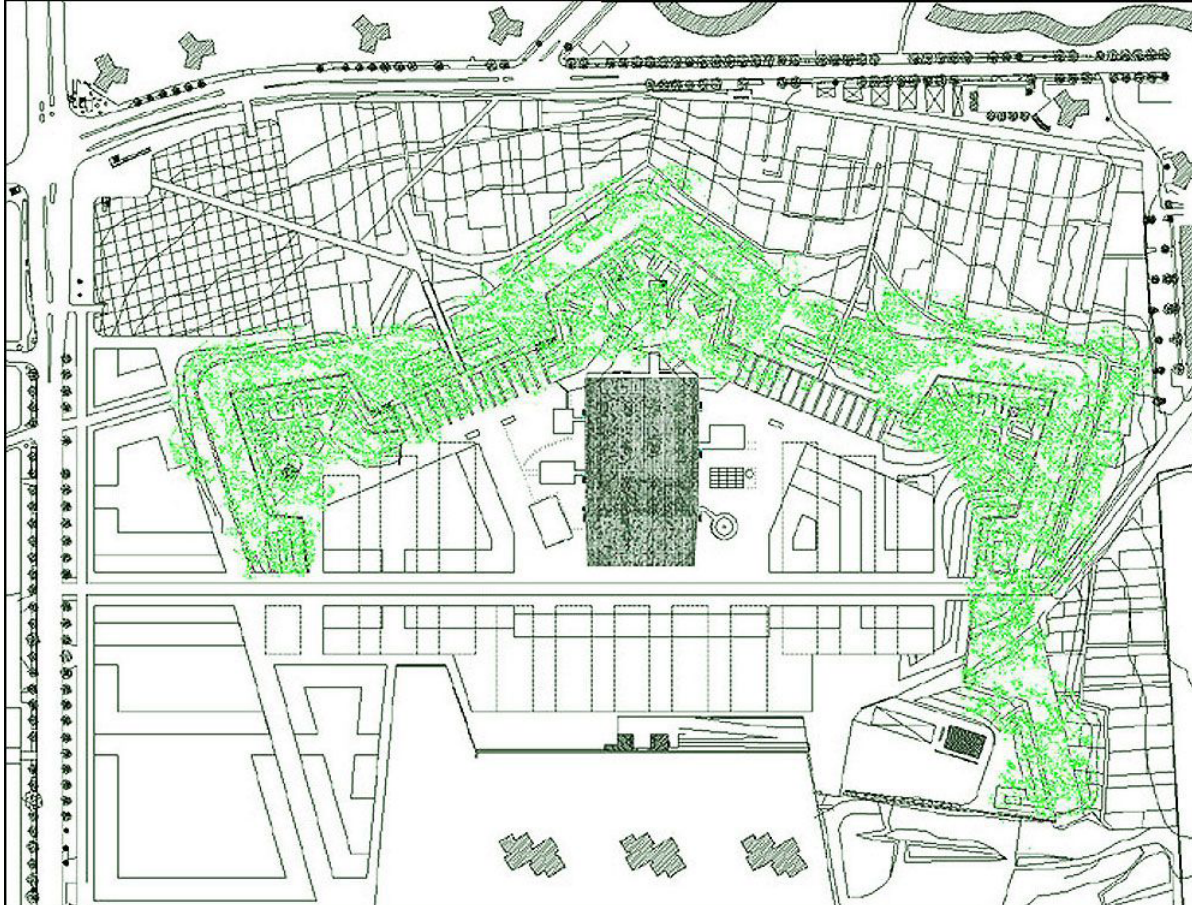
» *image: LIN*

» *AMF-06-ESS-LIN-installation of moveable pillars*

Métafort Multimedia Research Center

Aubervilliers, France

1998



» image: LIN

» AMF-07-ESS-LIN-master plan

Métafort Multimedia Research Center

Aubervilliers, France

1998



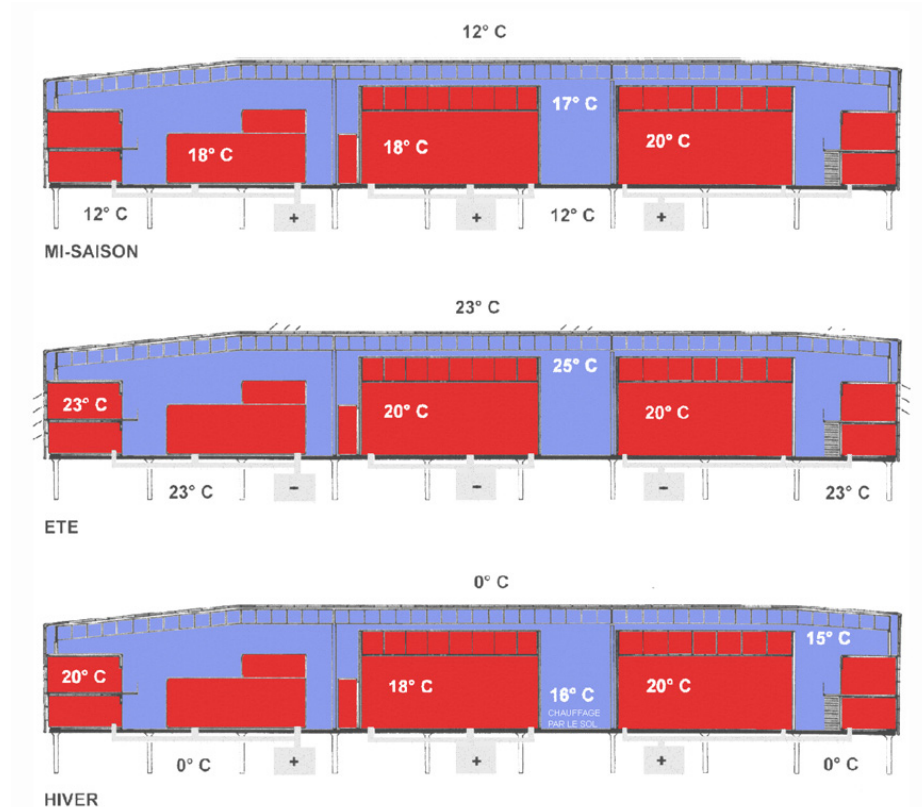
» image: LIN

» AMF-08-ESS-LIN-aerial view

Métafort Multimedia Research Center

Aubervilliers, France

1998



» image: LIN

» AMF-09-ESS-LIN-thermal variation

Métafort Multimedia Research Center

Aubervilliers, France

1998

MÉTAFORT

MÉTAFORT represents a new kind of utopia that consists in moving in the direction of current trends while at the same time aspiring to achieve social and cultural "control" of multimedia technologies from within. Its originality lies in the opportunity to compare and cross "multimedia culture" with more traditional forms of artistic expression, with a focus on the societal aspects and the decision to set up the institution in an outer urban area. It is in line with a series of similar projects like the ZKM, the MIT Media Lab and the NTT InterCommunication Centre in Tokyo.

The institution will assume the role of producer: it will offer advice and expertise, project engineering and technical facilities to players wishing to combine their experiments. Projects will be generated by proposals rather than commissioned.

MONOSPACE

Métafort is a socio-cultural multimedia research center established in the old Fort d'Aubervilliers on the northern fringe of Paris. Consisting of a monospace surrounded by six satellites, the main structure is comprised of a raised platform sheltered by an enveloping skin with variable permeability.

Fixed parts (conference rooms, control room) and flexible parts (laboratories, performing and production studios) are articulated on the platform. The satellites function as footbridges projecting into their immediate surroundings – both literally and symbolically – housing the media library, guest artist residences, training premises, a start up hotbed and a theatre stage.

PROGRAM

Enveloped under one roof, the village presents the image of a uniform single entity. The architectural space is differentiated by a gradation between two poles – a "fluid" architectural system in the center (tall spaces, angles of vision, sparse areas) giving way to a "water tight" system on the edges (small spaces, little squares, narrow walkways). The connection between the area of distribution and intimate space is made according to the "center outline area principle", or the "remoteness-density" principle as regards the quality of its interstices.

SYSTEM

The main building rests on a single slab raised on pilotis, a base plate which acts as the fixed support for Métafort while protecting the ground-level nerve center: a concentration of support systems incorporating delivery points, technical equipment rooms and additional spaces that function as the building's lifeline. The upper face of the plate provides for various types of spaces, incorporating stable elements like the Forum and exchange center while allowing for variable and hanging configurations of modular spaces which can be adjusted in size and volume to adapt to different projects – for example The Expression and Research centers (laboratories and production studi – separated by spaces referencing village streets and public squares.

Métafort Multimedia Research Center

Aubervilliers, France

1998

SKIN

The flexible roof ensures protection while distributing light throughout building areas via an arbitrary layout of glazed roof panels. The roof also allows the volume to become an INTERCLIMATIC space

STRUCTURE

The degree of sophistication of the methods of construction is proportionate to the life span of each element: content (the village) is achieved using "makeshift" methods; the adaptable framework (envelope) using light assembly techniques; the fixed framework (platform) using heavy techniques. The particulars of the mechanical assembly methods used for all construction elements allows for future dismantling of each component and therefore short-term adaptations and transformations as well as long-term recycling.

A similar structure implemented previously at the Ecole National d'Art Décoratif in Limoges, completed in 1993/94, provides the experience and a point of departure for the design of the

Métafort MONOSPACE

AERIAL VIEW

View over Aubervilliers fort as soon as it was built and now fossilized under a thick layer of greenery. It is separated from the Aubervilliers and Pantin suburbs by a network of traffic lanes and allotments.