

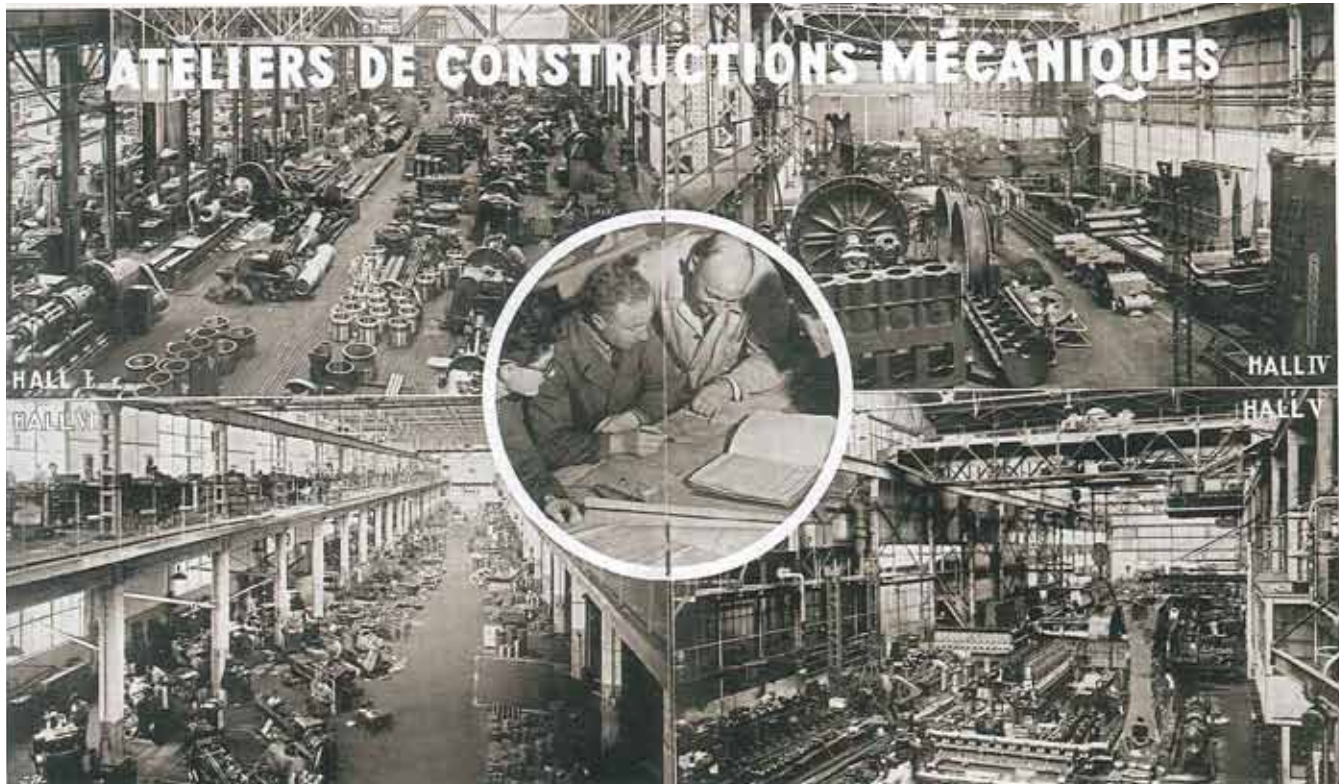
Creation of an inter-disciplinary digital cluster
Nantes, France
2015



» *image: LIN*

» *N6N-00-LIN-External view from Rue Arthur*

Creation of an inter-disciplinary digital cluster
Nantes, France
2015



» *image: Lin*

» *N6N-01-LIN-Historic Postcard of the Hall*

Creation of an inter-disciplinary digital cluster
Nantes, France
2015



» *image: LIN*

» *N6N-02-LIN-External view from Rue Tour Auvergne*

Creation of an inter-disciplinary digital cluster
Nantes, France
2015



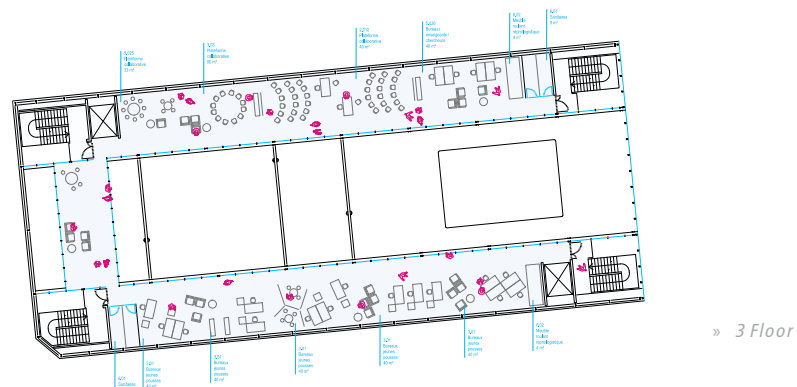
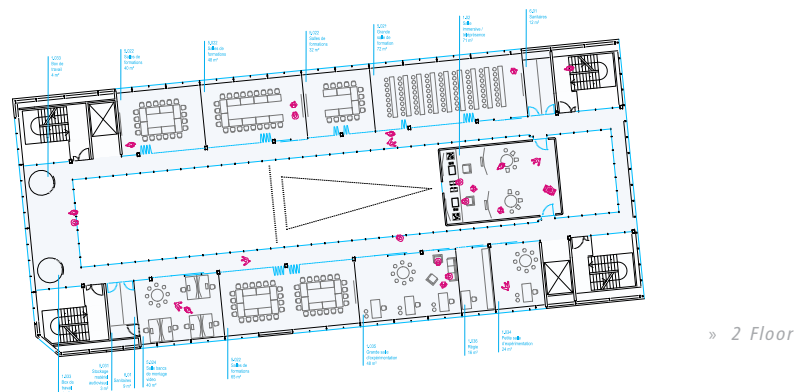
» *image: Lin*

» *N6N-03-LIN-Lageplan*

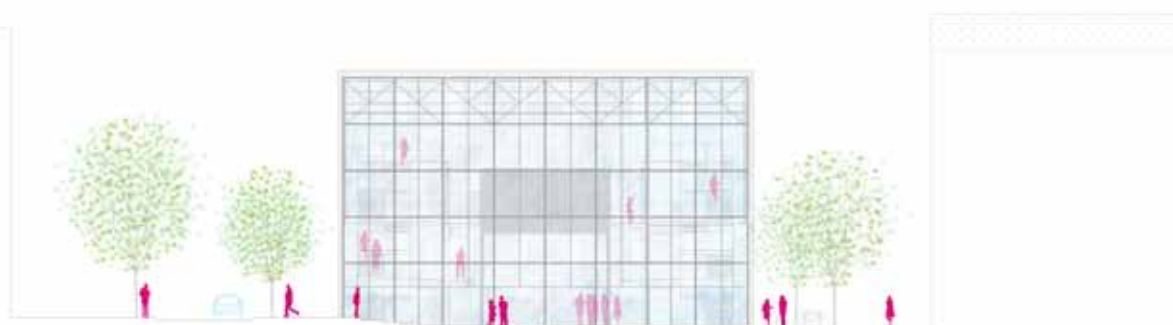
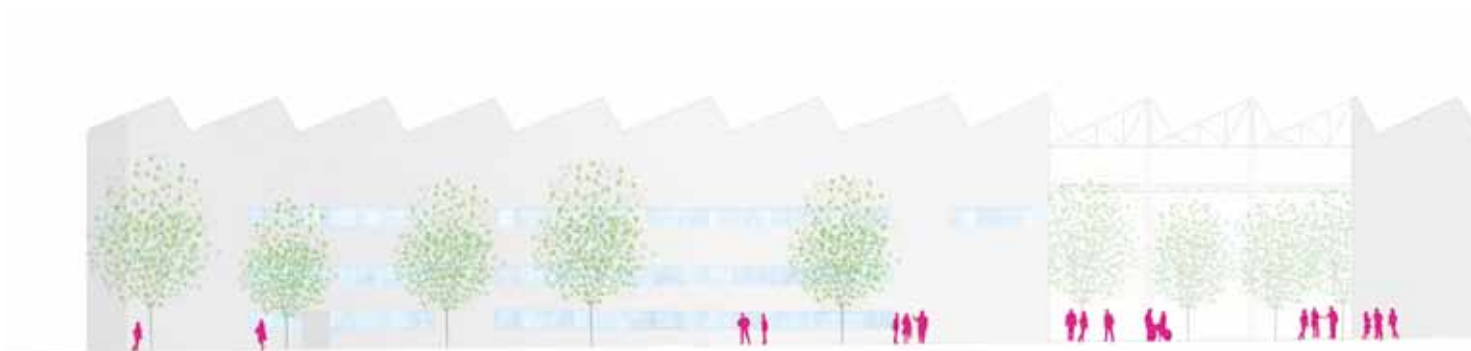
Creation of an inter-disciplinary digital cluster

Nantes, France

2015

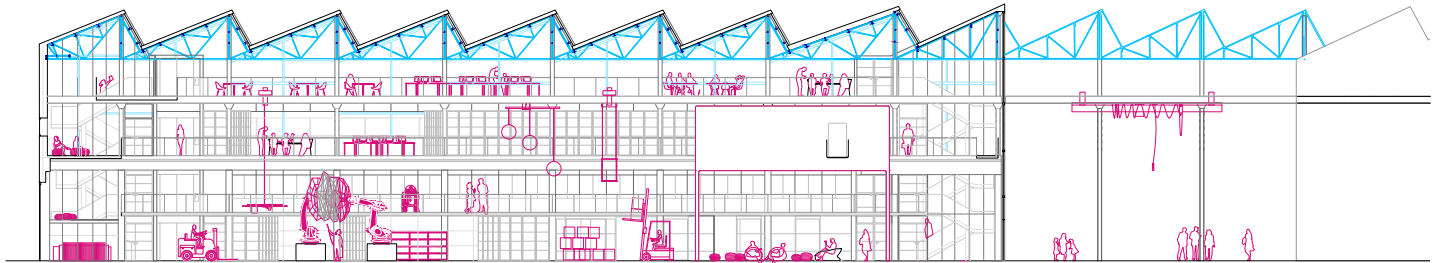


Creation of an inter-disciplinary digital cluster
Nantes, France
2015



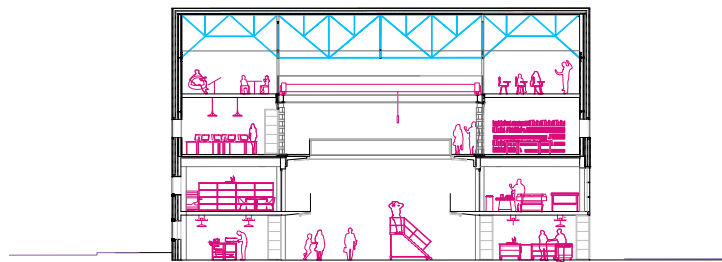
» N6N-05-LIN-Facades

Creation of an inter-disciplinary digital cluster
Nantes, France
2015



» *image: LIN*

» *N6N-06-LIN-Longitudinal Section*



» *N6N-07-LIN-Trasversal Section*

Creation of an inter-disciplinary digital cluster
Nantes, France
2015



» *image: LIN*

» *N6N-08-LIN-Internal view*

Creation of an inter-disciplinary digital cluster
Nantes, France
2015



» *image: LIN*

» *N6N-09-LIN-Internal view*

Creation of an inter-disciplinary digital cluster

Nantes, France

2015

N6N - Press download

EXPLAINING THE ARCHITECTURAL STAKES:

Halle 6 – West, veritable archetype of industrial architecture, is both the premises for and the symbol of partnership and creative cooperation.

The manufacturing buildings from the former Alstom site stand in proud testimony to Nantes' primacy in the naval field during the industrial economy era. Halle 6, which had been the last addition to the impressive foothold in the heart of the Nantes metropolitan area, is slated to become the flagship for Nantes' primacy in the new digital economy, a growing force that Nantes intends to drive forward.

In paying tribute to the industrial past and in writing present-day history, this new project combines both dimensions.

As this historical postcard shows, the production building was the vibrant setting for many activities: manufacturing workshops on the ground floor and above them, the design studios which gave rise to the projects. The architecture is highly conducive to ongoing creativity; it stimulates conception and invention. The building has been adapted to future uses. It incarnates sustainable architecture.

The project is deeply rooted in the historical continuity of creative production. It establishes a strong connection between digital creation – the new media, tools, installations, devices and working methods – and the architecture of the building, with the steel structure and streetside silhouette of the sheds.

The plan for the "Pôle Interdisciplinaire dédié aux Cultures Numériques" or Interdisciplinary Digital Cluster taking place in Halle 6 involves a flexible structure to support the ongoing process of transformation. The project is both innovative and accessible, and it is wide open to the general public.

The light, slightly silvery colour of the building is obtained through the use of Geholit paint with light-catching texture. The same paint is used throughout the structure on both new and old surfaces, unifying the entire space.

The geometry and spatial quality of Halle 6 have been preserved. Any new architectural work has been designed to ensure the quality of the space serving the researchers, students, creators and other users. The soft monochromatic colour creates ideal workspace that is highly conducive to concentration and innovation.

Eloquent Façades

For those who have been to Halle 6 in the past, this former industrial site has always embodied creation and experimentation.

The façades enclose countless memories forged within these walls. Today's façades have been thought out along these lines and propose an interpretation of the memories from the past through the use of plain monochromatic walls where past history can be read and future history can be made.

Structure

Keeping the existing structure of Halle 6 instead of erecting a new building was one of the major stakes in the project. The existing structure was analysed in terms of current construction and fire protection requirements and passed the test with flying colours. In the specific case of Halle 6, the structure could be saved.

Creation of an inter-disciplinary digital cluster

Nantes, France

2015

Central core

Halle 6 provides spacious premises organised around core empty space. The building was just waiting for new content to fill it. In the past Halle 6 was full of inventive, labour-intensive activity, today it teems with collaborative innovation.

The Halle has been emptied. Its structural members are clearly visible and understandable, and above all are ready for new adventures. Halle 6 has regained its original volume which awaits new use. The deck flooring which had been added has been removed from the central area; the side aisles on the ground floor and the upper storey have been cleared of the bulky constructions from the past. The impressive original open space stands ready and waiting, and Halle 6 expresses its industrial nature. The main body measures 10 meters width by 12 to 13 meters height, flanked by side aisles and walkways. At its core, the Fab Lab is the new heart where digital fabrication will be doing the work.

Now freed from its past uses, Halle 6 is ready for new operations and new cultures. Deck flooring can be added between the existing stories so as to create new spaces for new activities. Overlooking the central space, these new decks will have totally glazed façades so as to retain the volume and create the conditions for ongoing exchange between the many different digital practitioners.

The immersive collaboration room is the only new element to enter the central core. This room, which lies opposite the Public Square 5 meters above the floor, makes a major statement about this new home to the Digital Cluster.

These premises, formerly based on linear, Fordism economics are now becoming home to post-Fordism energy where interaction, cross-fertilisation and collaborative intelligence are the keys to growth.

Home to collaborative intelligence and networking

Programme elements are located in the side decks from the ground floor up to the fourth storey. The Fab Lab and the Public Square set up in the central space. Modular walls can easily separate the two spaces for access control. The entire main space can also be left intact, giving rise to the "street" character that all the different rooms overlook.

Upper-storey walkways across the central space make traffic on the upper floors easy and quick. The ample walkways are also great space for discussion, space for the ferment of a sharing economy. The walkways are an integral part of the collaborative rooms.

Propeller blades

The open decks in Halle 6 can easily hold ships' propellers. Display of propellers will be examined within the framework of a collaborative workshop project using the percent-for-art procedure or working with A. and P. Poirier on a new twist to this mnemonics process similar to their 2014 project at LU.

Seamless urban setting

The cadence of the openings on the south and west façades has been kept. The north façade, facing the Nantes School of Fine Arts (ENSBANM), has extensive glazing based on the existing windows so as to create a strong connection with the new pedestrian street. This transparency strongly beckons to exchange with ENSBANM and the city, for you can see what is going on. Transparency is also the reason for the big windows overlooking the pedestrian street. Visual protection

Creation of an inter-disciplinary digital cluster

Nantes, France

2015

can be implemented depending on needs. The east façade of the main entrance is one wide glazed wall. This clean cut takes your gaze right into the premises and creates an entry to the city, welcoming you. This façade can be adjusted with respect to Halle 6 east so as to obtain visual seamlessness between these two ENSBANM-related facilities for creativity and with other creative clusters in the Ile de Nantes neighbourhood.

The solid walls of the façades are insulated from the outside. The external wall insulation then receives a coat of rendering which is painted. The unity of the building is beautifully preserved; the immateriality of digital culture is clearly expressed.

The creation of this new abstract, luminous architecture adds further interest to a series of different types of architecture in this area.

The slightly silvery light shade chosen for Halle 6 creates a dialogue with the luminous architecture of ENSBANM by Franklin Azzi, with the external whiteness of the neighbouring building by Barto+Barto, and with the shining stainless steel at Insula by designed by Michel Roulleau.